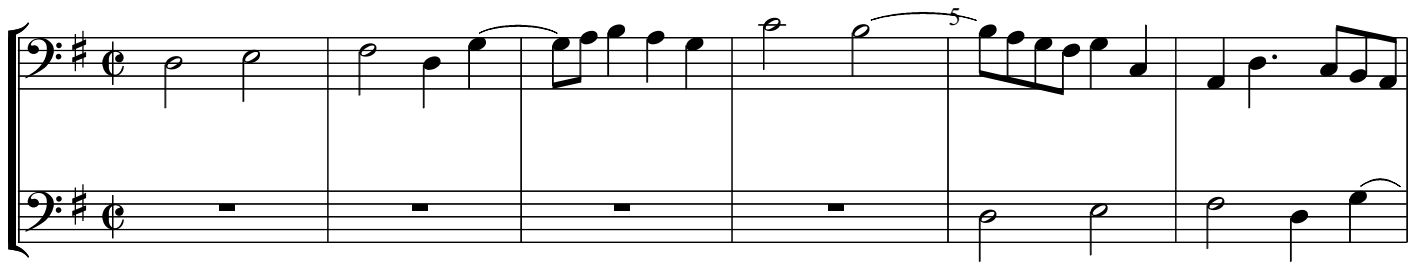


Fantasia à 2

Orlando Gibbons

VdGS# 5



35

System 1: Measures 35-40. The music is in bass clef with a key signature of one sharp (F#). The melody in the upper voice starts on a half note G4, followed by quarter notes A4, B4, and C5, then a half note D5. The lower voice provides a harmonic accompaniment with various note values including quarter and eighth notes.

40

System 2: Measures 40-45. The melody continues with a half note E5, followed by quarter notes F#5, G5, and A5. The lower voice continues its accompaniment pattern.

45

System 3: Measures 45-50. The melody features a half note B5, followed by quarter notes C6, D6, and E6. The lower voice continues with its accompaniment.

50

System 4: Measures 50-55. The melody includes a half note F#6, followed by quarter notes G6, A6, and B6. The lower voice continues with its accompaniment.

55

System 5: Measures 55-60. The melody concludes with a half note C7, followed by quarter notes D7, E7, and F#7. The lower voice continues with its accompaniment.

60

Two staves of music in bass clef with a key signature of one sharp (F#). The top staff contains a melodic line with eighth and sixteenth notes, including some beamed sixteenth notes. The bottom staff contains a bass line with eighth and sixteenth notes, also including beamed sixteenth notes. The measures are numbered 60 through 64.

65

Two staves of music in bass clef with a key signature of one sharp (F#). The top staff continues the melodic line with eighth and sixteenth notes. The bottom staff continues the bass line with eighth and sixteenth notes. The measures are numbered 65 through 69.

70

Two staves of music in bass clef with a key signature of one sharp (F#). The top staff begins with a whole rest in measure 70, followed by a melodic line. The bottom staff continues the bass line. The measures are numbered 70 through 74.

75

Two staves of music in bass clef with a key signature of one sharp (F#). The top staff continues the melodic line. The bottom staff continues the bass line. The measures are numbered 75 through 79.

80

Two staves of music in bass clef with a key signature of one sharp (F#). The top staff continues the melodic line. The bottom staff continues the bass line. The measures are numbered 80 through 84.

