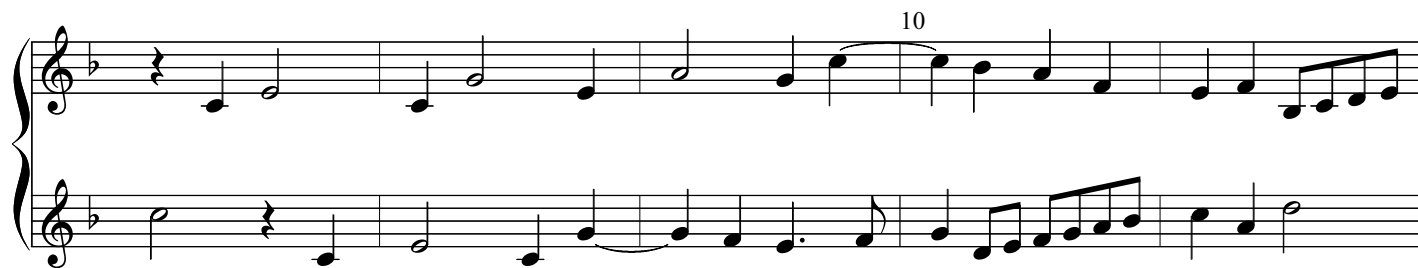


Fantasia

VdGS# 1

Orlando Gibbons



30



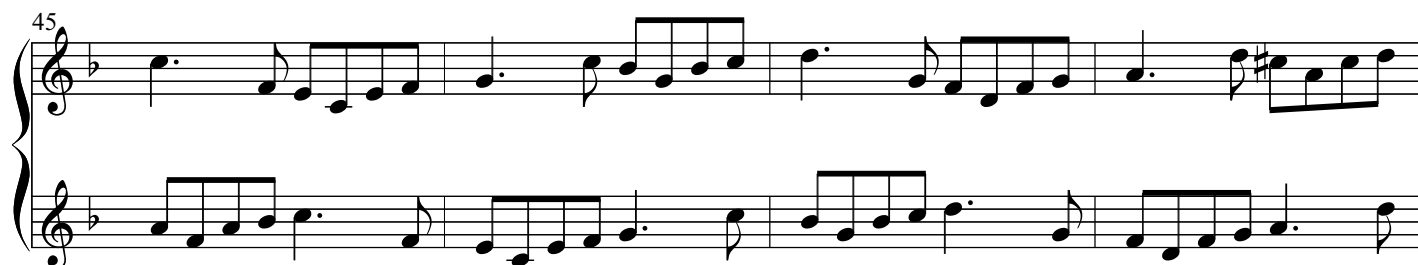
35



40



45



50

Handwritten musical notation for measures 50-54. The system consists of two staves. The upper staff is in treble clef and the lower staff is in bass clef. The key signature has one flat (B-flat). Measure 50 starts with a treble staff containing a half note G4, a quarter note A4, and a quarter note B4. The bass staff contains a half note F3, a quarter note G3, and a quarter note A3. The notation continues with various eighth and quarter notes, including some beamed eighth notes and a final measure with a half note G4 and a quarter note A4.

55

Handwritten musical notation for measures 55-59. The system consists of two staves. The upper staff is in treble clef and the lower staff is in bass clef. The key signature has one flat (B-flat). Measure 55 starts with a treble staff containing a half note G4, a quarter note A4, and a quarter note B4. The bass staff contains a half note F3, a quarter note G3, and a quarter note A3. The notation continues with various eighth and quarter notes, including some beamed eighth notes and a final measure with a half note G4 and a quarter note A4.

60

Handwritten musical notation for measures 60-64. The system consists of two staves. The upper staff is in treble clef and the lower staff is in bass clef. The key signature has one flat (B-flat). Measure 60 starts with a treble staff containing a half note G4, a quarter note A4, and a quarter note B4. The bass staff contains a half note F3, a quarter note G3, and a quarter note A3. The notation continues with various eighth and quarter notes, including some beamed eighth notes and a final measure with a half note G4 and a quarter note A4.

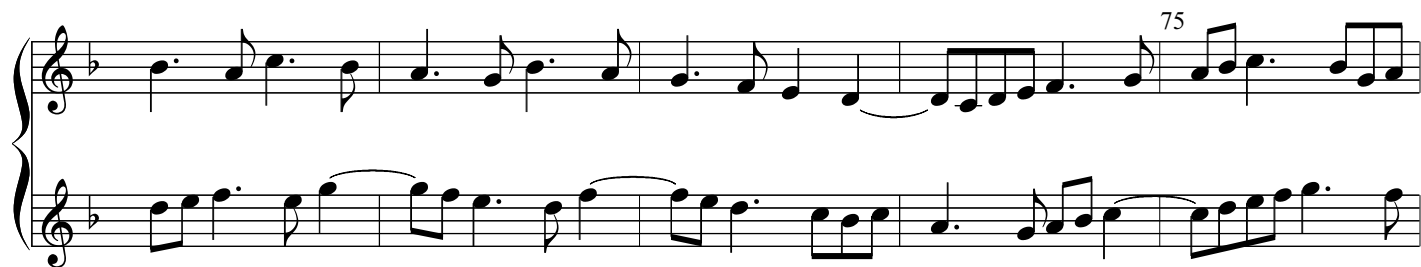
65

Handwritten musical notation for measures 65-69. The system consists of two staves. The upper staff is in treble clef and the lower staff is in bass clef. The key signature has one flat (B-flat). Measure 65 starts with a treble staff containing a half note G4, a quarter note A4, and a quarter note B4. The bass staff contains a half note F3, a quarter note G3, and a quarter note A3. The notation continues with various eighth and quarter notes, including some beamed eighth notes and a final measure with a half note G4 and a quarter note A4.

70

Handwritten musical notation for measures 70-74. The system consists of two staves. The upper staff is in treble clef and the lower staff is in bass clef. The key signature has one flat (B-flat). Measure 70 starts with a treble staff containing a half note G4, a quarter note A4, and a quarter note B4. The bass staff contains a half note F3, a quarter note G3, and a quarter note A3. The notation continues with various eighth and quarter notes, including some beamed eighth notes and a final measure with a half note G4 and a quarter note A4.

75



This system contains measures 70 through 74. The right hand features a melody with dotted rhythms and eighth-note patterns, while the left hand provides a steady accompaniment of eighth-note chords.



This system contains measures 75 through 79. The right hand continues the melodic line with more eighth-note runs, and the left hand maintains the accompaniment pattern.

80

85



This system contains measures 80 through 84. The right hand has a more active melodic line with sixteenth-note passages. The left hand continues the accompaniment. The system concludes with a double bar line at measure 85.