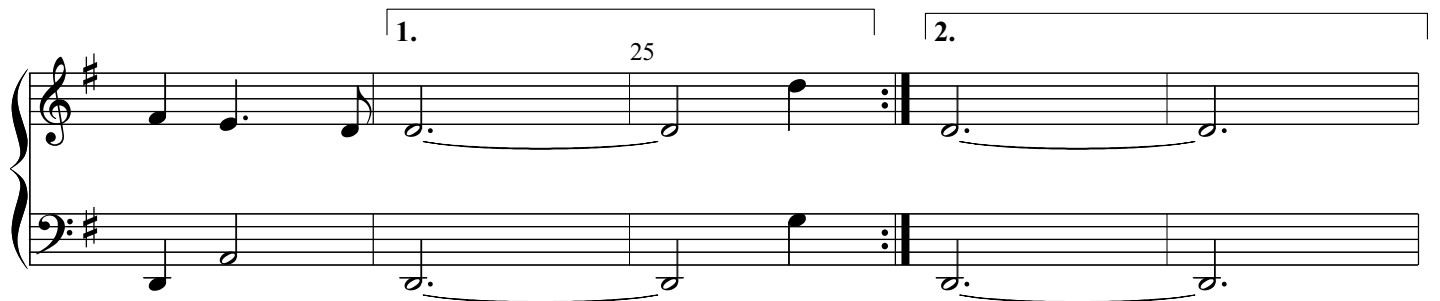
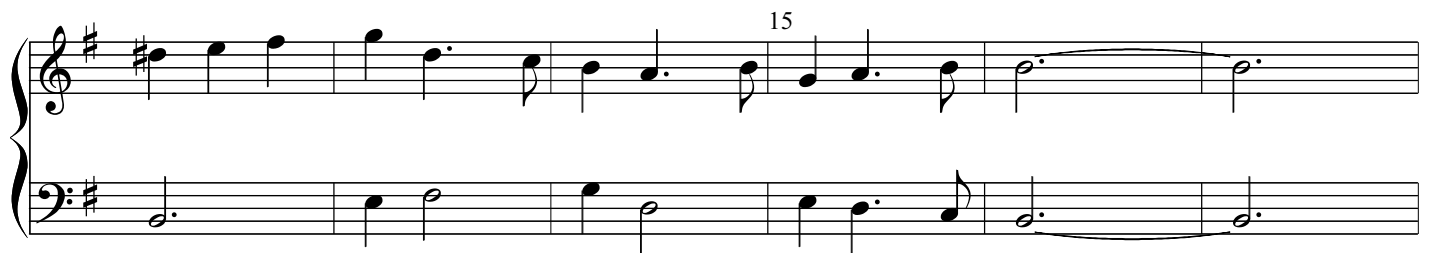


**Ayres** from OC1005  
31. Corant

John Jenkins  
VdGS# 31



30

This system contains measures 30 through 34. The treble clef staff begins with a repeat sign. The melody in the treble clef consists of quarter notes, eighth notes, and a dotted quarter note. The bass clef accompaniment features a steady eighth-note pattern in the left hand and a mix of quarter and eighth notes in the right hand.

35

This system contains measures 35 through 39. The treble clef staff has a melodic line with a slur over measures 36 and 37, followed by a dotted half note. The bass clef staff continues with a similar rhythmic pattern, including a slur over measures 36 and 37.

40

This system contains measures 40 through 44. The treble clef staff shows a sequence of quarter and eighth notes, ending with a dotted half note. The bass clef staff features a consistent eighth-note accompaniment with occasional quarter notes.

45

This system contains measures 45 through 49. The treble clef staff begins with a half note followed by a slur over measures 46 and 47. The bass clef staff continues with a steady eighth-note accompaniment.

50 55

This system contains measures 50 through 54. The treble clef staff has a melodic line with a slur over measures 51 and 52, and a dotted half note at the end. The bass clef staff features a steady eighth-note accompaniment, ending with a double bar line.