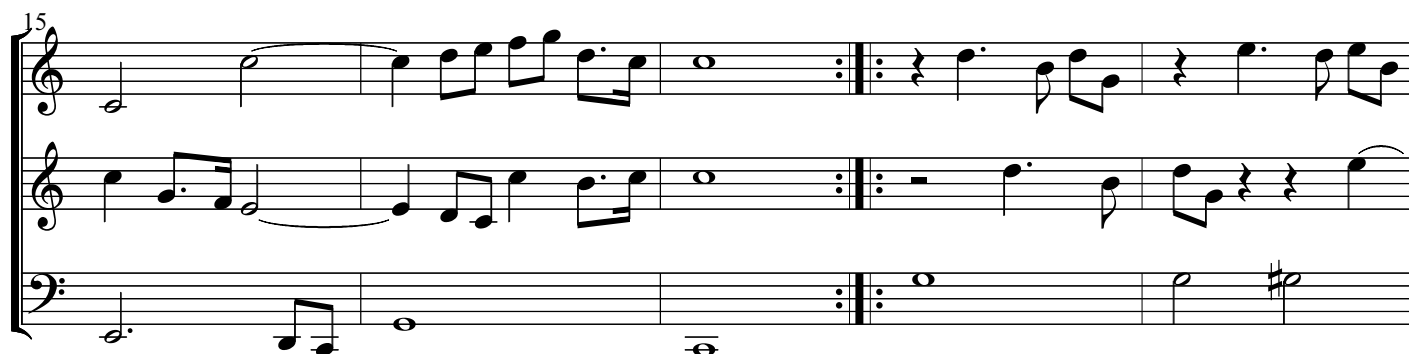
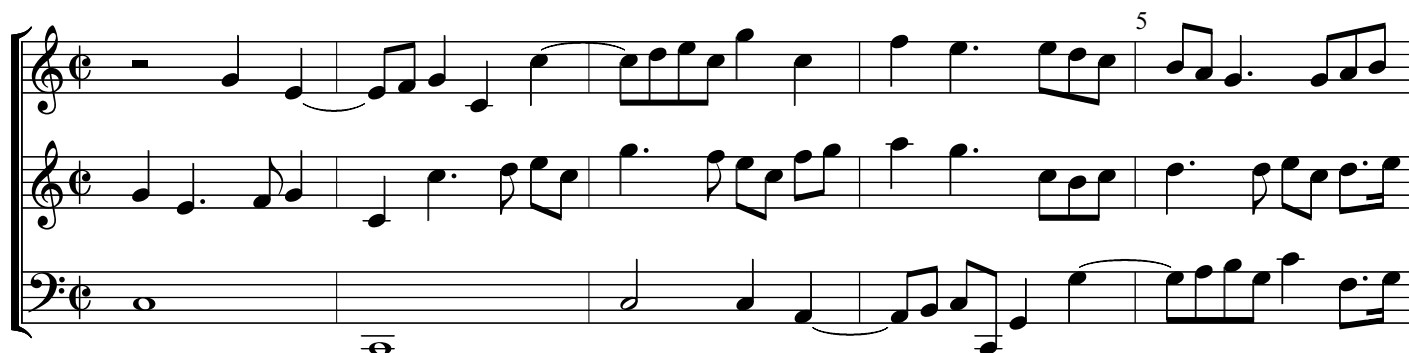


# Newberry Ayres

56. Aire

John Jenkins  
*VdGS# 56*



20

Musical score for 'The Rose Tree' in 3/4 time. The score consists of three staves: Treble, Alto, and Bass. The key signature has one sharp (F#). The melody is primarily in the Treble staff, with the Bass staff providing a harmonic accompaniment. The Alto staff contains rests, indicating it is not played in this arrangement.

25

Handwritten musical score for 'The Rose Tree' in 3/4 time. The score is written on three staves: Treble (Right Hand), Treble (Left Hand), and Bass (Right Hand). The key signature has one flat (B-flat). The melody is in the Treble (Right Hand) staff. The lyrics are written below the staves.

Handwritten musical score for "The Rose Tree" in 3/4 time. The score is written on three staves: Treble (Right Hand), Treble (Left Hand), and Bass (Right Hand). The key signature has one flat (B-flat). The melody is in the Treble (Right Hand) staff. The lyrics are written below the staves.

30

Handwritten musical score for three staves. The first staff (treble clef) contains measures 30-34. The second staff (treble clef) contains measures 35-39. The third staff (bass clef) contains measures 30-34. The music is in 4/4 time and features a mix of eighth, quarter, and half notes, with some beamed sixteenth notes. The key signature has one sharp (F#).

35

Sheet music for 'The Rose Tree' in G major, 2/4 time. The score consists of three staves: Treble, Alto, and Bass. The Treble staff begins with a treble clef and a key signature of one sharp (F#). The Alto staff begins with an alto clef and a key signature of one sharp (F#). The Bass staff begins with a bass clef and a key signature of one sharp (F#). The music is written in 2/4 time. The Treble staff contains the melody, starting with a quarter note G4, followed by eighth notes A4-B4, quarter notes C5-B4, eighth notes A4-G4, and a quarter note F#4. The Alto staff contains a whole rest in the first measure, followed by eighth notes G4-A4, quarter notes B4-A4, eighth notes G4-F#4, and a quarter note E4. The Bass staff contains a whole note G3 in the first measure, followed by quarter notes F#3-E3, D3-C3, and B2-A2. The piece concludes with a double bar line and repeat dots in all three staves.