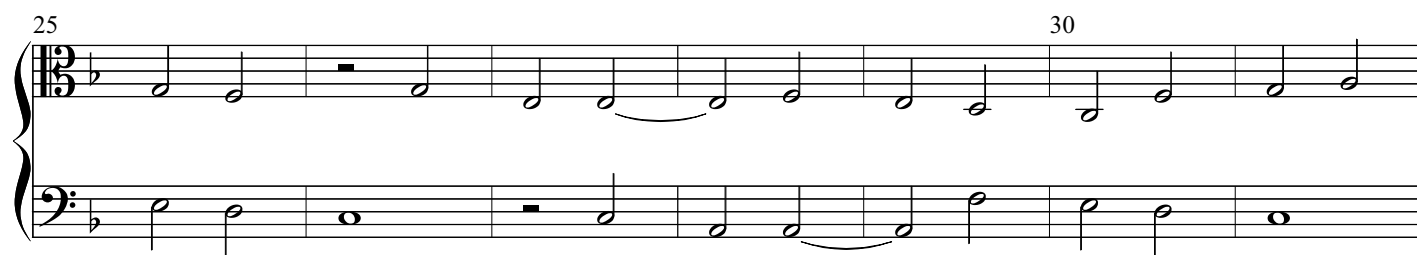


Duet No. 9

Orlando di Lasso



50

[illegible]

60

65

The musical score for 'The Rose Tree' is presented in a two-staff format. The top staff uses a 12/8 time signature and a key signature of one flat (B-flat). The melody begins with a quarter rest, followed by a series of eighth and quarter notes. A slur connects a group of notes starting at measure 65. The bottom staff provides a bass line with a mix of quarter and eighth notes, including a measure with a whole rest. A slur also connects a group of notes in the bottom staff starting at measure 65.

70

The musical score for 'The Rose Tree' is presented in a grand staff format, consisting of two staves joined by a brace on the left. The key signature is one flat (B-flat), and the time signature is 12/8. The score begins with a treble clef on the upper staff and a bass clef on the lower staff. The melody is primarily written in the treble staff, featuring a series of eighth and sixteenth notes, often beamed together, and some longer note values. The bass staff provides a harmonic accompaniment with a mix of eighth, sixteenth, and quarter notes. The piece concludes with a double bar line and repeat dots at the end of both staves.