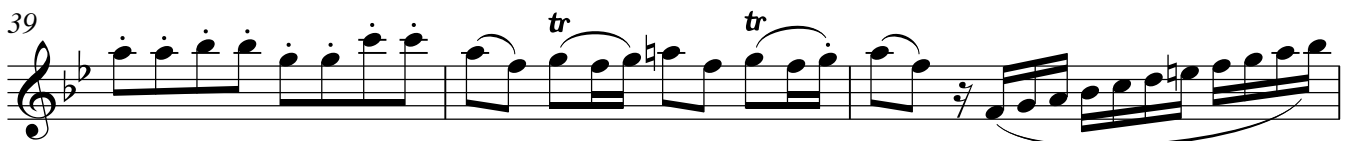
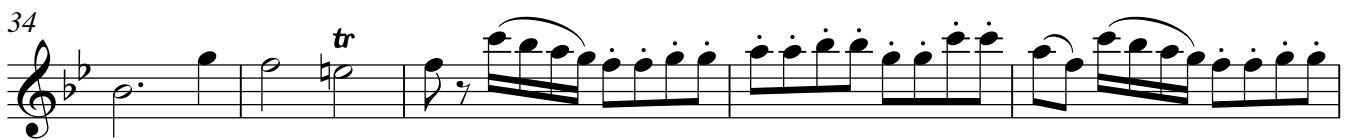
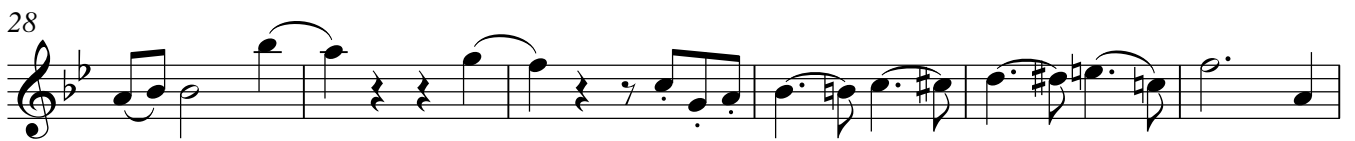
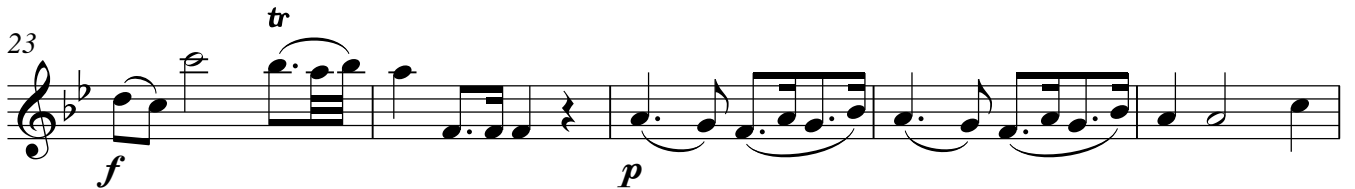


Clarinet in C

Drei Duos for Clarinet and Bassoon WoO 27 (No. 3)

Ludwig van Beethoven

1 **Allegro sostenuto.**



Clarinet in C

45 *tr* *p*

50 *p*

56 *f*

59 *f*

64 *p*

70 *f*

76 *p*

83

89 *f*

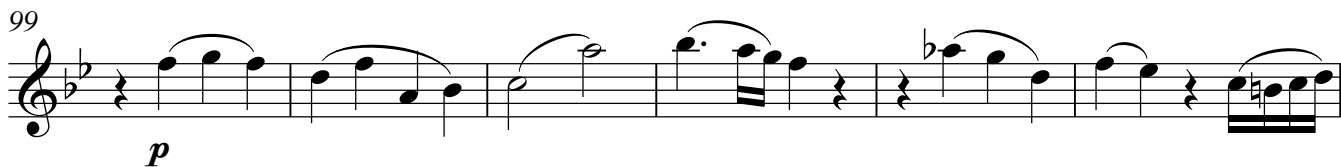
92

96



99

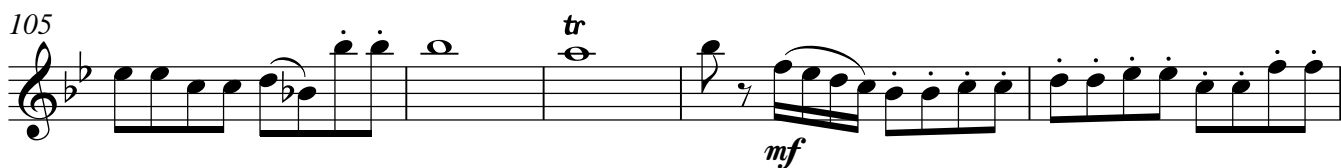
p



105

tr

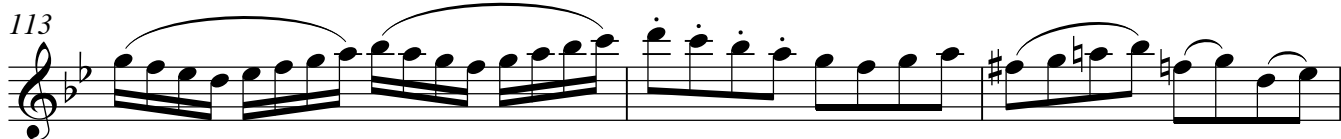
mf



110



113



116



119

tr



125

f



130



Aria con Variazioni

4

Andantino con moto

Clarinet in C

134 *1*
dolce *tr*

7

13 Var.I

19

27 Var.II

33

37

41

46 Var.III *tr*

50

Detailed description: This page of a musical score for Clarinet in C, titled 'Aria con Variazioni', contains measures 134 through 50. The music is in a 2/4 time signature and a key signature of two flats (B-flat and E-flat). The tempo is 'Andantino con moto'. The score is divided into several systems, each starting with a measure number. Measure 134 begins with a first ending bracket and a 'dolce' marking. A trill (tr) is indicated above a note in measure 134. Measure 135 contains a repeat sign. Measure 136 is the start of the first variation (Var.I), featuring a series of eighth-note chords. Measure 137 is a repeat sign. Measure 138 is the start of the second variation (Var.II), featuring a series of eighth-note chords with slurs. Measure 139 is a repeat sign. Measure 140 is the start of the third variation (Var.III), featuring a series of eighth-note chords with slurs. Measure 141 is a repeat sign. Measure 142 is the start of the fourth variation (Var.IV), featuring a series of eighth-note chords with slurs. Measure 143 is a repeat sign. Measure 144 is the start of the fifth variation (Var.V), featuring a series of eighth-note chords with slurs. Measure 145 is a repeat sign. Measure 146 is the start of the sixth variation (Var.VI), featuring a series of eighth-note chords with slurs. Measure 147 is a repeat sign. Measure 148 is the start of the seventh variation (Var.VII), featuring a series of eighth-note chords with slurs. Measure 149 is a repeat sign. Measure 150 is the start of the eighth variation (Var.VIII), featuring a series of eighth-note chords with slurs. Measure 151 is a repeat sign. Measure 152 is the start of the ninth variation (Var.IX), featuring a series of eighth-note chords with slurs. Measure 153 is a repeat sign. Measure 154 is the start of the tenth variation (Var.X), featuring a series of eighth-note chords with slurs. Measure 155 is a repeat sign. Measure 156 is the start of the eleventh variation (Var.XI), featuring a series of eighth-note chords with slurs. Measure 157 is a repeat sign. Measure 158 is the start of the twelfth variation (Var.XII), featuring a series of eighth-note chords with slurs. Measure 159 is a repeat sign. Measure 160 is the start of the thirteenth variation (Var.XIII), featuring a series of eighth-note chords with slurs. Measure 161 is a repeat sign. Measure 162 is the start of the fourteenth variation (Var.XIV), featuring a series of eighth-note chords with slurs. Measure 163 is a repeat sign. Measure 164 is the start of the fifteenth variation (Var.XV), featuring a series of eighth-note chords with slurs. Measure 165 is a repeat sign. Measure 166 is the start of the sixteenth variation (Var.XVI), featuring a series of eighth-note chords with slurs. Measure 167 is a repeat sign. Measure 168 is the start of the seventeenth variation (Var.XVII), featuring a series of eighth-note chords with slurs. Measure 169 is a repeat sign. Measure 170 is the start of the eighteenth variation (Var.XVIII), featuring a series of eighth-note chords with slurs. Measure 171 is a repeat sign. Measure 172 is the start of the nineteenth variation (Var.XIX), featuring a series of eighth-note chords with slurs. Measure 173 is a repeat sign. Measure 174 is the start of the twentieth variation (Var.XXX), featuring a series of eighth-note chords with slurs. Measure 175 is a repeat sign. Measure 176 is the start of the twenty-first variation (Var.XXI), featuring a series of eighth-note chords with slurs. Measure 177 is a repeat sign. Measure 178 is the start of the twenty-second variation (Var.XXXII), featuring a series of eighth-note chords with slurs. Measure 179 is a repeat sign. Measure 180 is the start of the twenty-third variation (Var.XXXIII), featuring a series of eighth-note chords with slurs. Measure 181 is a repeat sign. Measure 182 is the start of the twenty-fourth variation (Var.XXXIV), featuring a series of eighth-note chords with slurs. Measure 183 is a repeat sign. Measure 184 is the start of the twenty-fifth variation (Var.XXXV), featuring a series of eighth-note chords with slurs. Measure 185 is a repeat sign. Measure 186 is the start of the twenty-sixth variation (Var.XXXVI), featuring a series of eighth-note chords with slurs. Measure 187 is a repeat sign. Measure 188 is the start of the twenty-seventh variation (Var.XXXVII), featuring a series of eighth-note chords with slurs. Measure 189 is a repeat sign. Measure 190 is the start of the twenty-eighth variation (Var.XXXVIII), featuring a series of eighth-note chords with slurs. Measure 191 is a repeat sign. Measure 192 is the start of the twenty-ninth variation (Var.XXXIX), featuring a series of eighth-note chords with slurs. Measure 193 is a repeat sign. Measure 194 is the start of the thirtieth variation (Var.XL), featuring a series of eighth-note chords with slurs. Measure 195 is a repeat sign. Measure 196 is the start of the thirty-first variation (Var.XLI), featuring a series of eighth-note chords with slurs. Measure 197 is a repeat sign. Measure 198 is the start of the thirty-second variation (Var.XLII), featuring a series of eighth-note chords with slurs. Measure 199 is a repeat sign. Measure 200 is the start of the thirty-third variation (Var.XLIII), featuring a series of eighth-note chords with slurs. Measure 201 is a repeat sign. Measure 202 is the start of the thirty-fourth variation (Var.XLIV), featuring a series of eighth-note chords with slurs. Measure 203 is a repeat sign. Measure 204 is the start of the thirty-fifth variation (Var.XLV), featuring a series of eighth-note chords with slurs. Measure 205 is a repeat sign. Measure 206 is the start of the thirty-sixth variation (Var.XLVI), featuring a series of eighth-note chords with slurs. Measure 207 is a repeat sign. Measure 208 is the start of the thirty-seventh variation (Var.XLVII), featuring a series of eighth-note chords with slurs. Measure 209 is a repeat sign. Measure 210 is the start of the thirty-eighth variation (Var.XLVIII), featuring a series of eighth-note chords with slurs. Measure 211 is a repeat sign. Measure 212 is the start of the thirty-ninth variation (Var.XLIX), featuring a series of eighth-note chords with slurs. Measure 213 is a repeat sign. Measure 214 is the start of the fortieth variation (Var.L), featuring a series of eighth-note chords with slurs. Measure 215 is a repeat sign. Measure 216 is the start of the forty-first variation (Var.LI), featuring a series of eighth-note chords with slurs. Measure 217 is a repeat sign. Measure 218 is the start of the forty-second variation (Var.LII), featuring a series of eighth-note chords with slurs. Measure 219 is a repeat sign. Measure 220 is the start of the forty-third variation (Var.LIII), featuring a series of eighth-note chords with slurs. Measure 221 is a repeat sign. Measure 222 is the start of the forty-fourth variation (Var.LIV), featuring a series of eighth-note chords with slurs. Measure 223 is a repeat sign. Measure 224 is the start of the forty-fifth variation (Var.LV), featuring a series of eighth-note chords with slurs. Measure 225 is a repeat sign. Measure 226 is the start of the forty-sixth variation (Var.LVI), featuring a series of eighth-note chords with slurs. Measure 227 is a repeat sign. Measure 228 is the start of the forty-seventh variation (Var.LVII), featuring a series of eighth-note chords with slurs. Measure 229 is a repeat sign. Measure 230 is the start of the forty-eighth variation (Var.LVIII), featuring a series of eighth-note chords with slurs. Measure 231 is a repeat sign. Measure 232 is the start of the forty-ninth variation (Var.LIX), featuring a series of eighth-note chords with slurs. Measure 233 is a repeat sign. Measure 234 is the start of the fiftieth variation (Var.LX), featuring a series of eighth-note chords with slurs. Measure 235 is a repeat sign.

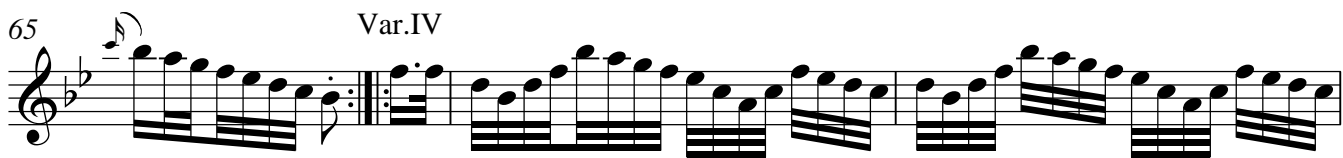
55



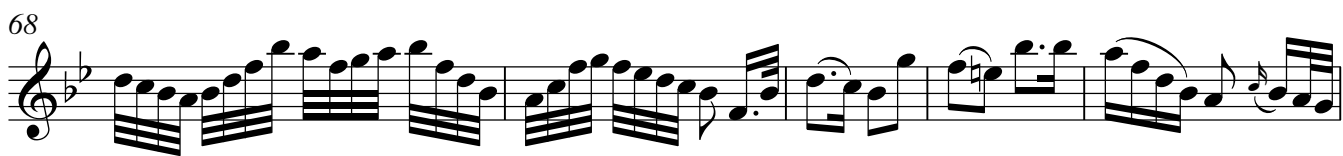
60



65 Var.IV



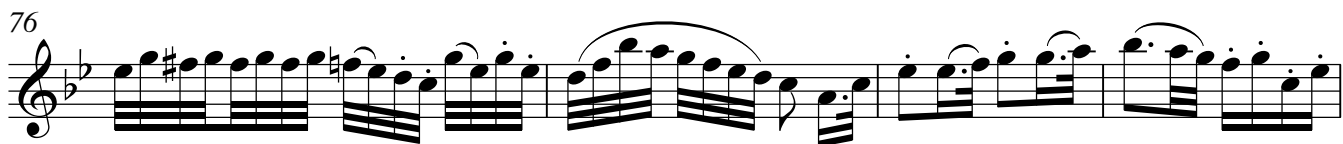
68



73 *mf*



76



80 *p* *f* *p*



87 **Allegro assai**