

Konzert in G

für Violine und Orchester

W. A. Mozart
KV 216, 1775

I. Allegro

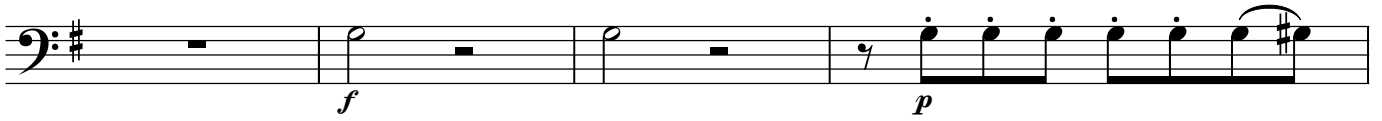
Violoncello e Basso

The image shows a page of musical notation for the Violoncello e Basso part of the first movement of Mozart's Concerto in G major, KV 216. The score is written in bass clef with a key signature of one sharp (F#) and a common time signature (C). The tempo is marked 'I. Allegro'. The music consists of 50 measures, with measure numbers 5, 10, 14, 16, 22, 26, 30, 34, 39, 44, and 49 indicated at the start of their respective lines. The dynamics are marked with *f* (forte) and *p* (piano). The notation includes various rhythmic values, slurs, and accents.

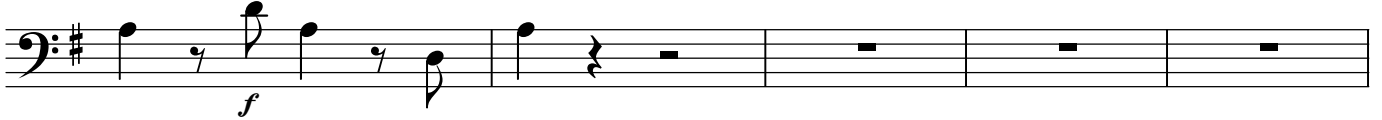
Violoncello e Basso



59



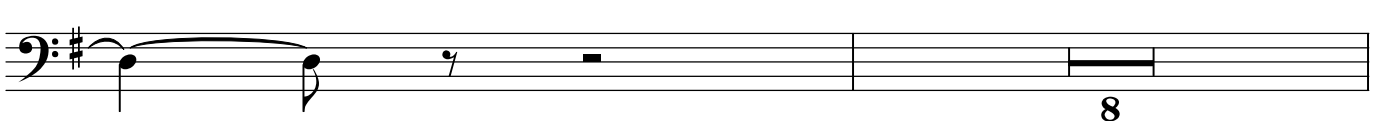
63



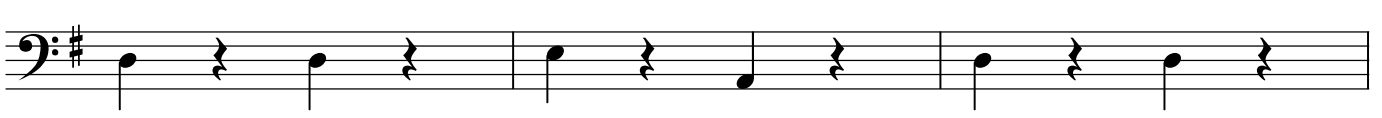
68



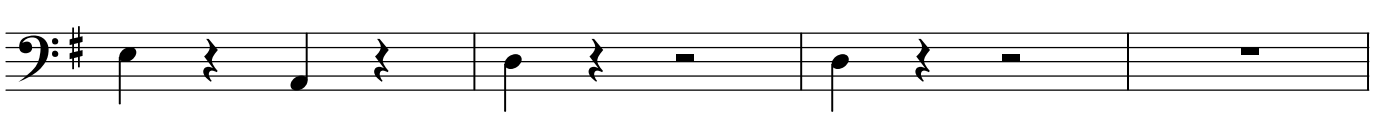
72



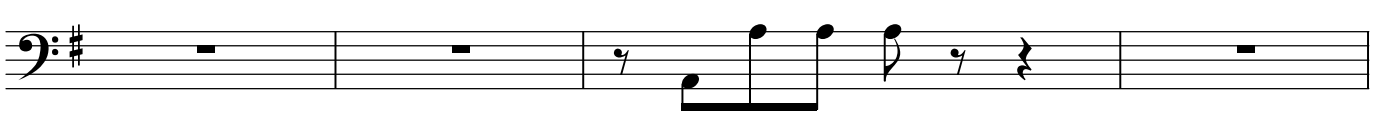
81



84



88



92



97



101



106



111



Konzert in G / Mozart KV 216.1

Violoncello e Basso

177

181

186

190

199

202

206

210

214 simile

218

222

8

f *p* *f* *p* *crescendo* *f* *f*