

# Sonata

DOMENICO SCARLATTI  
K.1 L.366

Allegro

Measures 1-2 of the Sonata. The music is in G minor (one flat) and common time. The right hand features a melodic line with eighth-note patterns and a trill on the final note of the second measure. The left hand provides a rhythmic accompaniment with eighth-note chords.

Measures 3-5. The right hand continues with eighth-note patterns and trills. The left hand features a descending eighth-note line in the bass clef.

Measures 6-7. The right hand has a more complex melodic line with various intervals. The left hand continues with eighth-note accompaniment.

Measures 8-9. The right hand features a series of trills. The left hand continues with eighth-note accompaniment.

Measures 10-11. The right hand has a melodic line with eighth notes and trills. The left hand continues with eighth-note accompaniment.

Measures 12-13. The right hand features a melodic line with eighth notes and trills. The left hand continues with eighth-note accompaniment.

Measures 14-15. The right hand has a melodic line with eighth notes and trills. The left hand continues with eighth-note accompaniment.

16

Musical notation for measures 16 and 17. The system consists of a treble clef staff and a bass clef staff. The key signature has one flat (B-flat). Measure 16 features a complex rhythmic pattern in the treble with eighth and sixteenth notes, and a bass line with quarter notes. Measure 17 continues the treble pattern with a sharp sign (#) above the staff and a bass line with quarter notes.

18

Musical notation for measures 18 and 19. The system consists of a treble clef staff and a bass clef staff. The key signature has one flat (B-flat). Measure 18 features a treble staff with a wavy line above the staff and a bass line with quarter notes. Measure 19 continues the treble pattern with a wavy line above the staff and a bass line with quarter notes.

20

Musical notation for measures 20 and 21. The system consists of a treble clef staff and a bass clef staff. The key signature has one flat (B-flat). Measure 20 features a treble staff with a sharp sign (#) above the staff and a bass line with quarter notes. Measure 21 continues the treble pattern with a sharp sign (#) above the staff and a bass line with quarter notes.

22

Musical notation for measures 22 and 23. The system consists of a treble clef staff and a bass clef staff. The key signature has one flat (B-flat). Measure 22 features a treble staff with a sharp sign (#) above the staff and a bass line with quarter notes. Measure 23 continues the treble pattern with a flat sign (b) below the staff and a bass line with quarter notes.

24

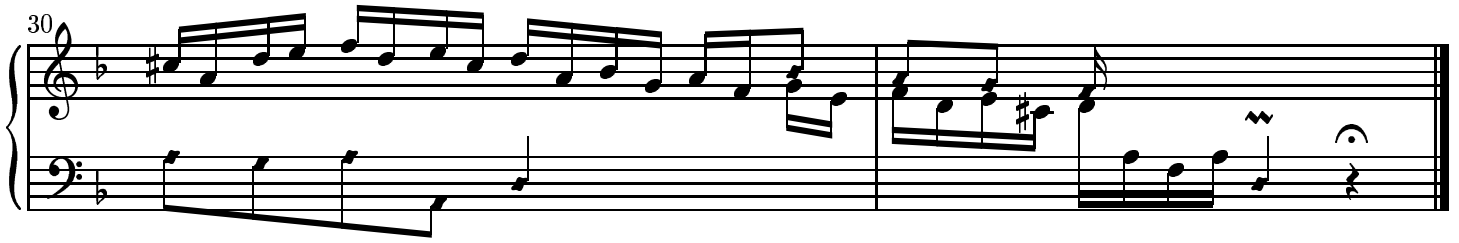
Musical notation for measures 24 and 25. The system consists of a treble clef staff and a bass clef staff. The key signature has one flat (B-flat). Measure 24 features a treble staff with a wavy line above the staff and a bass line with quarter notes. Measure 25 continues the treble pattern with a wavy line above the staff and a bass line with quarter notes.

26

Musical notation for measures 26 and 27. The system consists of a treble clef staff and a bass clef staff. The key signature has one flat (B-flat). Measure 26 features a treble staff with a sharp sign (#) above the staff and a bass line with quarter notes. Measure 27 continues the treble pattern with a flat sign (b) below the staff and a bass line with quarter notes.

28

Musical notation for measures 28, 29, 30, and 31. The system consists of a treble clef staff and a bass clef staff. The key signature has one flat (B-flat). Measure 28 features a treble staff with a sharp sign (#) above the staff and a bass line with quarter notes. Measure 29 continues the treble pattern with a sharp sign (#) above the staff and a bass line with quarter notes. Measure 30 continues the treble pattern with a sharp sign (#) above the staff and a bass line with quarter notes. Measure 31 continues the treble pattern with a sharp sign (#) above the staff and a bass line with quarter notes.



In bar 12 beat 2, the trilled 16th g was probably added later, as there is also a dot on the initial 8th f.

Copyright ©John Sankey 1999. Typeset by GNU LilyPond 1.2.16. Released under the GNU General Public License. You are free to copy and distribute this document as much as you wish, in any format, as long as this notice appears on each copy.