

(Complete suites)  
**BANCHETTO MUSICALE**

for Brass Quintet  
Suite 13 - 16

**Trumpet in Bb 3**

Johann Hermann Schein (1586-1630)

Arr. Michel Rondeau

Suite 13.1 - Padouana ♩ = 100



53



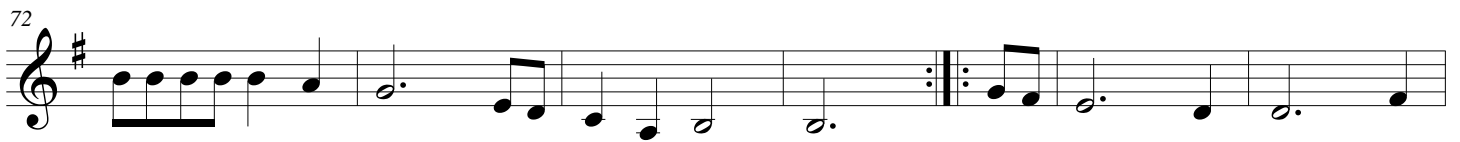
S.13.4 - Allemande



66



72



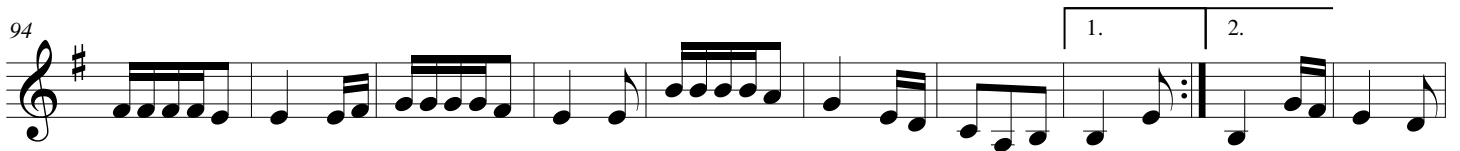
78



84 **Tripla**



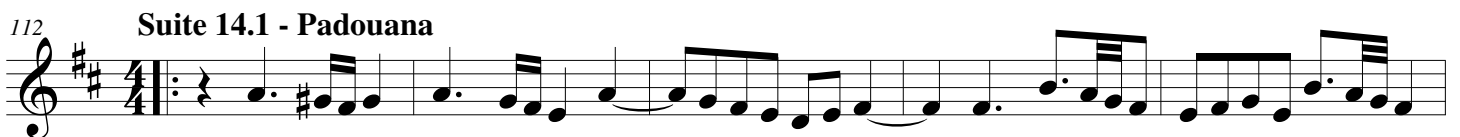
94



104

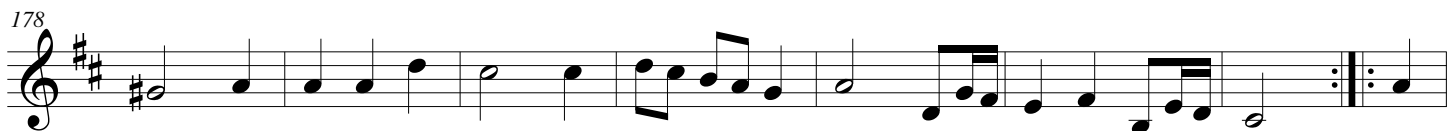
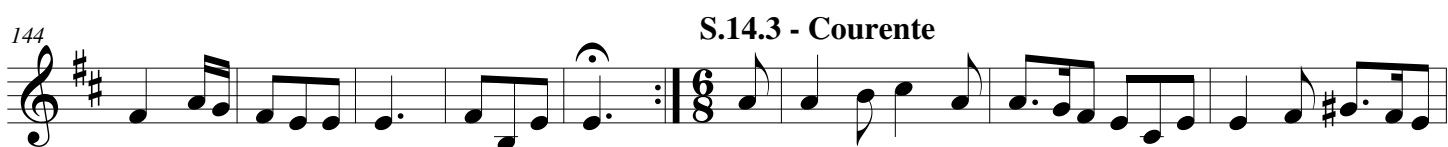


112 **Suite 14.1 - Padouana**



117





193 Suite 15.1 - Padouana

Musical staff for Suite 15.1 - Padouana, measures 193-198. The staff is in treble clef with a key signature of two sharps (F# and C#) and a 4/4 time signature. The music begins with a repeat sign and a first ending bracket. The melody consists of eighth and quarter notes.

Musical staff for Suite 15.1 - Padouana, measures 199-203. The staff is in treble clef with a key signature of two sharps and a 4/4 time signature. The music features a repeat sign with first and second endings, marked with '7' above the notes.

Musical staff for Suite 15.1 - Padouana, measures 204-208. The staff is in treble clef with a key signature of two sharps and a 4/4 time signature. The music includes a repeat sign with first and second endings, marked with '7' above the notes.

Musical staff for Suite 15.1 - Padouana, measures 209-213. The staff is in treble clef with a key signature of two sharps and a 4/4 time signature. The music concludes with a repeat sign and a final double bar line.

214 S.15.2 - Gagliarda

Musical staff for S.15.2 - Gagliarda, measures 214-218. The staff is in treble clef with a key signature of two sharps and a 3/4 time signature. The music features a repeat sign with first and second endings.

S.15.3 - Courente

Musical staff for S.15.3 - Courente, measures 219-227. The staff is in treble clef with a key signature of two sharps and a 6/8 time signature. The music includes a repeat sign with first and second endings.

Musical staff for S.15.3 - Courente, measures 228-233. The staff is in treble clef with a key signature of two sharps and a 6/8 time signature. The music continues with eighth and quarter notes.

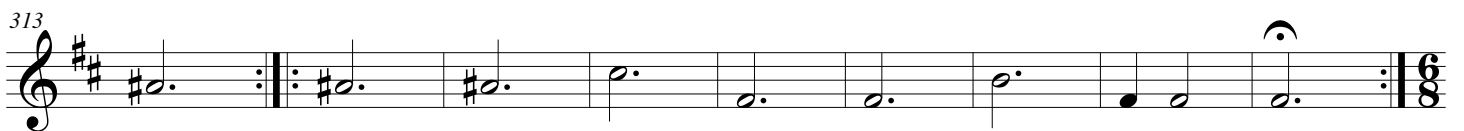
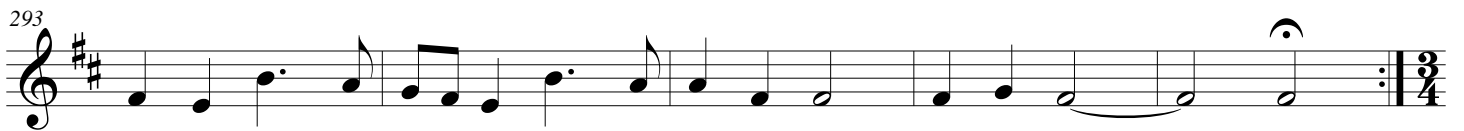
234 S.15.4 - Allemande

Musical staff for S.15.4 - Allemande, measures 234-240. The staff is in treble clef with a key signature of two sharps and a 2/4 time signature. The music features a repeat sign with first and second endings.

Musical staff for S.15.4 - Allemande, measures 241-248. The staff is in treble clef with a key signature of two sharps and a 2/4 time signature. The music concludes with a repeat sign and a final double bar line.

249 Tripla

Musical staff for Tripla, measures 249-253. The staff is in treble clef with a key signature of two sharps and a 3/8 time signature. The music features a repeat sign with first and second endings.



322 S.16.3 - Courente

Musical notation for S.16.3 - Courente, measures 322-327. The piece is in G major (one sharp) and 6/8 time. It begins with a repeat sign. The melody consists of eighth and sixteenth notes.

Musical notation for S.16.3 - Courente, measures 328-333. The piece continues with eighth and sixteenth notes. It ends with a repeat sign and a final cadence in 2/4 time.

334 S.16.4 - Allemande

Musical notation for S.16.4 - Allemande, measures 334-342. The piece is in G major (one sharp) and 2/4 time. It begins with a repeat sign. The melody features eighth and sixteenth notes.

Musical notation for S.16.4 - Allemande, measures 343-349. The piece continues with eighth and sixteenth notes. It ends with a repeat sign and a final cadence in 3/8 time.

350 Tripla

Musical notation for Tripla, measures 350-359. The piece is in G major (one sharp) and 3/8 time. It begins with a repeat sign. The melody consists of eighth and sixteenth notes.

Musical notation for Tripla, measures 360-365. The piece continues with eighth and sixteenth notes. It ends with a repeat sign and a final cadence.