

(Complete suites)
BANCHETTO MUSICALE

for Brass Quintet
Suite 13 - 16

Trumpet in C 3

Johann Hermann Schein (1586-1630)
Arr. Michel Rondeau

Suite 13.1 - Padouana ♩ = 100

6

11

16

23 S.13.2 - Gagliarda

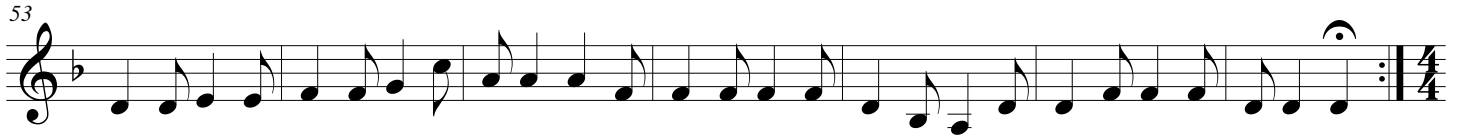
31

37

44

S.13.3 - Courente

53



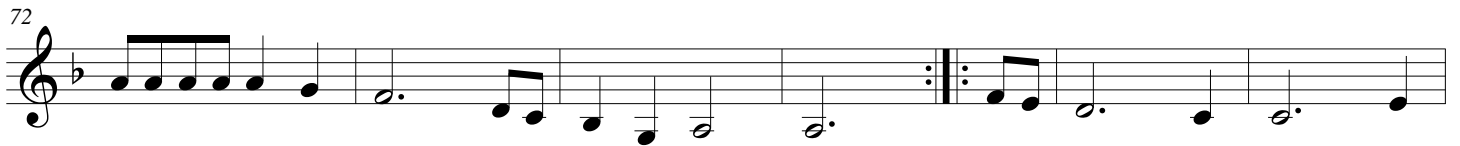
S.13.4 - Allemande



66



72



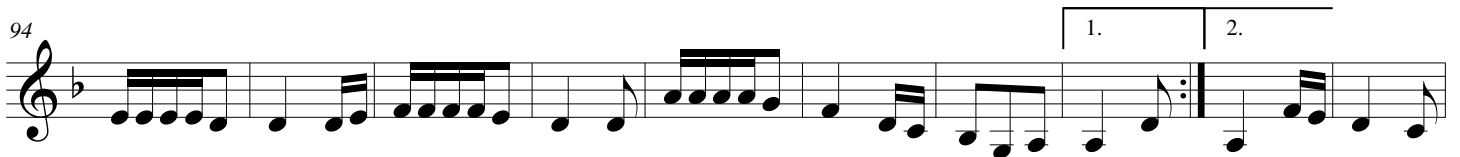
78



84 **Tripla**



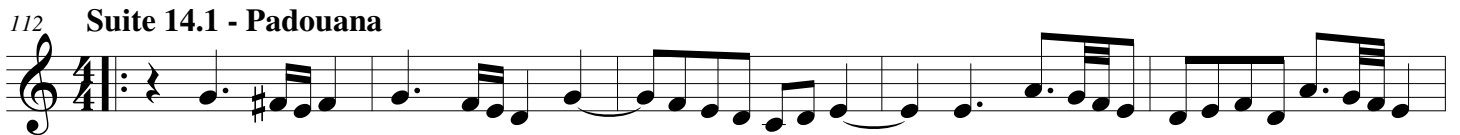
94



104

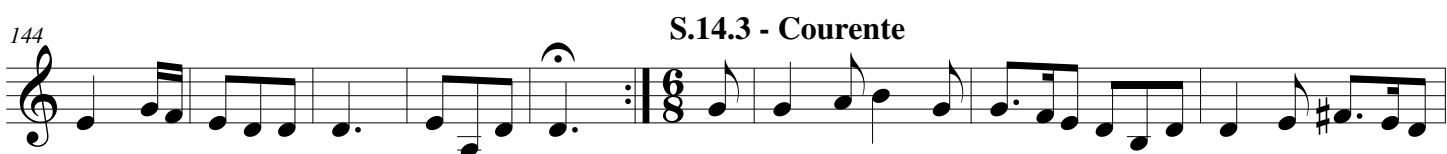


112 **Suite 14.1 - Padouana**



117





193 Suite 15.1 - Padouana

Musical notation for Suite 15.1 - Padouana, measures 193-198. The piece is in 4/4 time. The melody starts with a dotted quarter note, followed by eighth notes, and includes a sharp sign on the second staff.

Musical notation for Suite 15.1 - Padouana, measures 199-203. The piece is in 4/4 time. The melody features a repeat sign with first and second endings, and includes a fermata over the final note.

Musical notation for Suite 15.1 - Padouana, measures 204-208. The piece is in 4/4 time. The melody includes a repeat sign with first and second endings, and a sharp sign on the second staff.

Musical notation for Suite 15.1 - Padouana, measures 209-213. The piece is in 4/4 time. The melody includes a repeat sign with first and second endings, and a fermata over the final note.

214 S.15.2 - Gagliarda

Musical notation for S.15.2 - Gagliarda, measures 214-218. The piece is in 3/8 time. The melody includes a repeat sign with first and second endings, and a fermata over the final note.

S.15.3 - Courente

Musical notation for S.15.3 - Courente, measures 219-227. The piece is in 6/8 time. The melody includes a repeat sign with first and second endings, and a sharp sign on the second staff.

Musical notation for S.15.3 - Courente, measures 228-233. The piece is in 6/8 time. The melody includes a sharp sign on the second staff.

234 S.15.4 - Allemande

Musical notation for S.15.4 - Allemande, measures 234-240. The piece is in 2/4 time. The melody includes a repeat sign with first and second endings, and a fermata over the final note.

Musical notation for S.15.4 - Allemande, measures 241-248. The piece is in 2/4 time. The melody includes a repeat sign with first and second endings, and a fermata over the final note.

249 Tripla

Musical notation for Tripla, measures 249-253. The piece is in 3/8 time. The melody includes a repeat sign with first and second endings, and a sharp sign on the second staff.

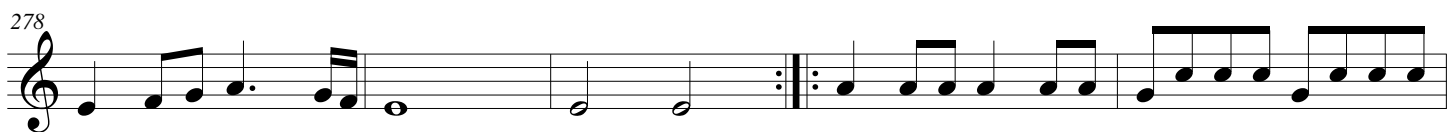
261



273 **Suite 16.1 - Padouana**



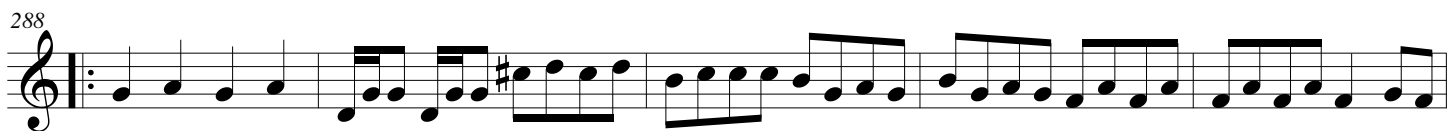
278



283



288



293



298 **S.16.2 - Gagliardia**



306



313



322 S.16.3 - Courente

Musical notation for S.16.3 - Courente, measures 322-327. The piece is in 6/8 time. It begins with a repeat sign. The melody consists of eighth and sixteenth notes, with a repeat sign at the end of the first phrase.

Musical notation for S.16.3 - Courente, measures 328-333. The piece continues in 6/8 time. It features a second phrase with a repeat sign, followed by a final cadence in 2/4 time.

334 S.16.4 - Allemande

Musical notation for S.16.4 - Allemande, measures 334-342. The piece is in 2/4 time. It starts with a repeat sign and features a melody of quarter and eighth notes.

Musical notation for S.16.4 - Allemande, measures 343-349. The piece continues in 2/4 time. It features a melody of quarter and eighth notes, ending with a repeat sign.

350 Tripla

Musical notation for Tripla, measures 350-359. The piece is in 3/8 time. It begins with a repeat sign and features a melody of eighth and sixteenth notes.

Musical notation for Tripla, measures 360-365. The piece continues in 3/8 time. It features a melody of eighth and sixteenth notes, ending with a repeat sign.