

(Complete Suites)

# BANCHETTO MUSICALE

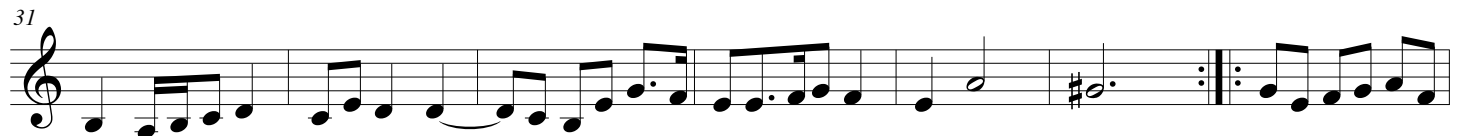
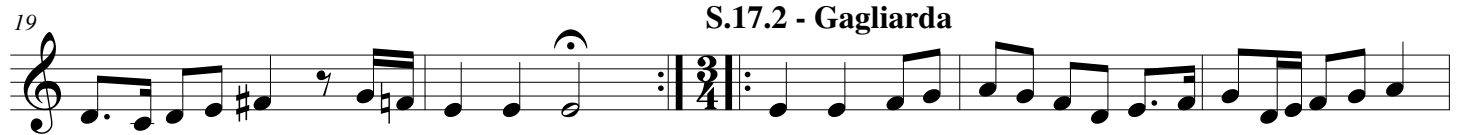
## Trumpet in C 3

for Brass Quintet  
Suite 17-20

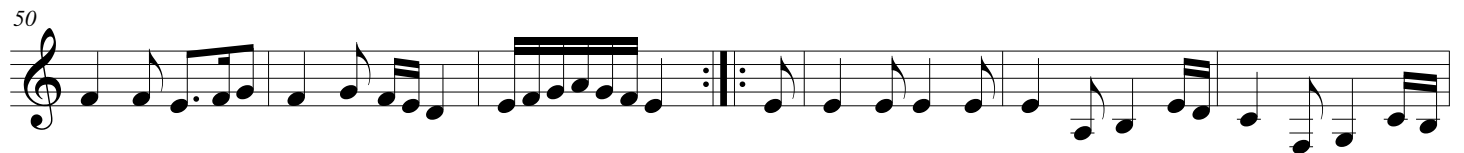
Johann Hermann Schein (1586-1630)

Arr. Michel Rondeau

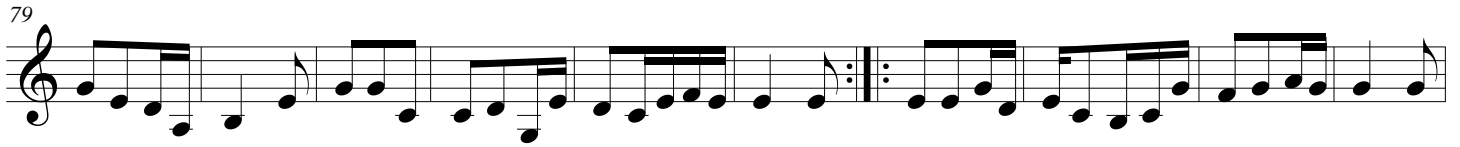
### Suite 17.1 - Padouana



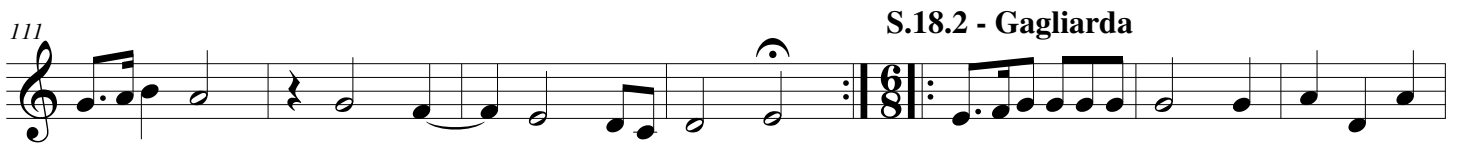
### S.17.3 - Courente



## 61 S.17.4 - Allemande



## Suite 18.1 - Padouana



139 S.18.3 - Courente

151 S.18.4 - Allemande

4 Schein - BANCHETTO MUSICALE Suite 17-20 - C Trumpet 3

201 S.19.2 - Gagliarda

Musical notation for S.19.2 - Gagliarda, measures 201-208. The piece is in 3/4 time and begins with a fermata on a half note. The melody consists of eighth and quarter notes.

Musical notation for S.19.2 - Gagliarda, measures 209-216. The melody continues with eighth and quarter notes, ending with a repeat sign.

Musical notation for S.19.2 - Gagliarda, measures 217-224. The melody continues with eighth and quarter notes, ending with a repeat sign.

Musical notation for S.19.2 - Gagliarda, measures 225-232. The melody continues with eighth and quarter notes, ending with a fermata and a repeat sign.

S.19.3 - Courente

Musical notation for S.19.3 - Courente, measures 233-242. The piece is in 6/8 time and features a continuous eighth-note pattern.

Musical notation for S.19.3 - Courente, measures 243-252. The eighth-note pattern continues, ending with a repeat sign.

243 S.19.4 - Allemande

Musical notation for S.19.4 - Allemande, measures 243-250. The piece is in 2/4 time and begins with a fermata on a half note.

Musical notation for S.19.4 - Allemande, measures 251-258. The melody consists of quarter and eighth notes, ending with a repeat sign.

259 Tripla

Musical notation for Tripla, measures 259-268. The piece is in 3/8 time and features a continuous eighth-note pattern.

Musical notation for Tripla, measures 269-276. The eighth-note pattern continues, ending with a fermata and a repeat sign.

## 277 Suite 20.1 - Padouana

